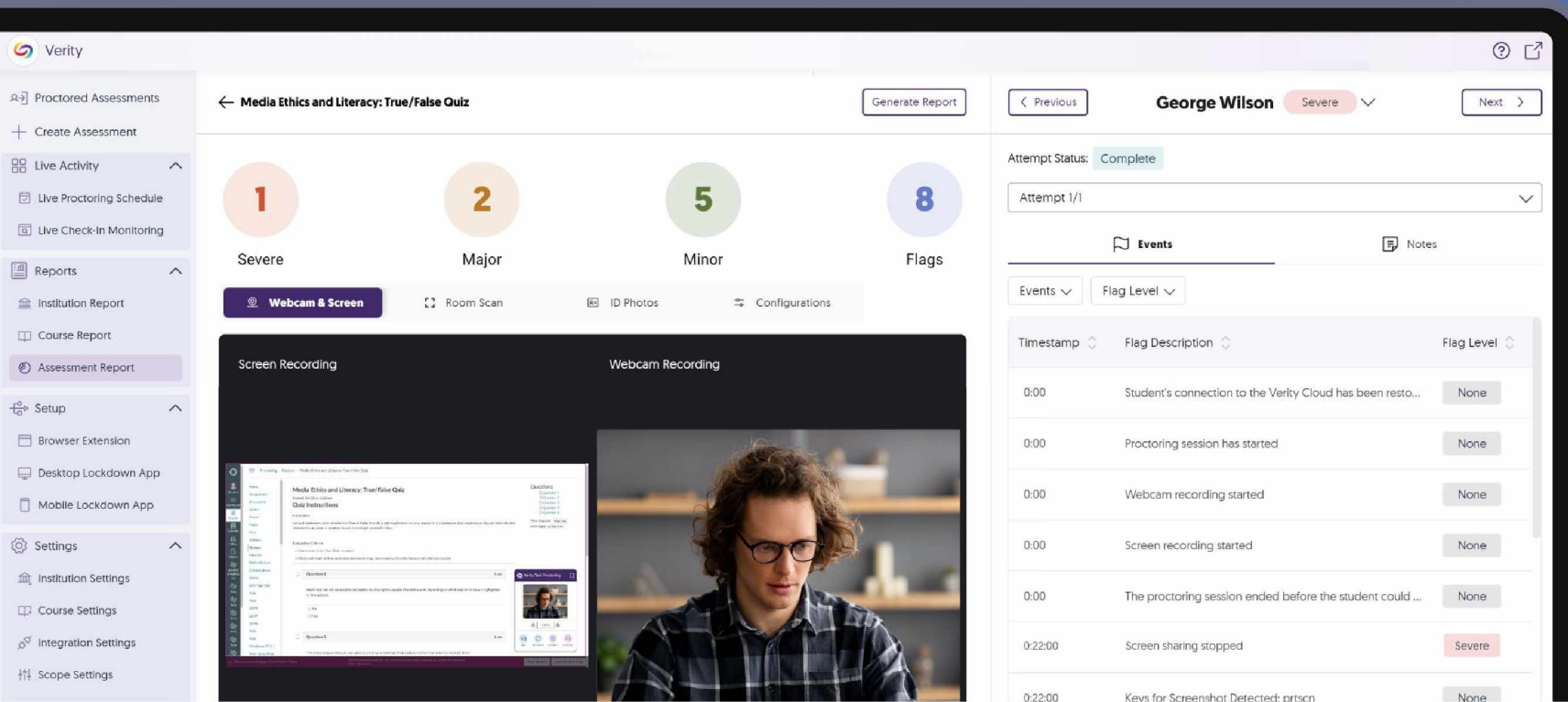


# YuJa Verity Test Proctoring Platform

Ensure Academic Integrity With Secure Test Proctoring



The screenshot displays the YuJa Verity interface for a proctored assessment. On the left, a sidebar contains navigation options: Proctored Assessments, Create Assessment, Live Activity, Live Proctoring Schedule, Live Check-In Monitoring, Reports, Institution Report, Course Report, Assessment Report, Setup, Browser Extension, Desktop Lockdown App, Mobile Lockdown App, Settings, Institution Settings, Course Settings, Integration Settings, and Scope Settings.

The main content area shows the assessment results for "Media Ethics and Literacy: True/False Quiz". The results are summarized as follows:

| Flag Level | Count |
|------------|-------|
| Severe     | 1     |
| Major      | 2     |
| Minor      | 5     |
| Flags      | 8     |

Below the summary, there are tabs for "Webcam & Screen", "Room Scan", "ID Photos", and "Configurations". The "Webcam & Screen" tab is active, showing a split view: "Screen Recording" on the left and "Webcam Recording" on the right. The webcam recording shows a student with glasses looking at the screen.

On the right side of the interface, a detailed view for student "George Wilson" is shown. The attempt status is "Complete" (Attempt 1/1). Below this is an "Events" table:

| Timestamp | Flag Description   | Flag Level |
|-----------|--|------------|
| 0:00      | Student's connection to the Verity Cloud has been resto... | None       |
| 0:00      | Proctoring session has started                             | None       |
| 0:00      | Webcam recording started                                   | None       |
| 0:00      | Screen recording started                                   | None       |
| 0:00      | The proctoring session ended before the student could ...  | None       |
| 0:22:00   | Screen sharing stopped                                     | Severe     |
| 0:22:00   | Keys for Screenshot Detected: prsncn                       | None       |



# Enable Automated or Live Online Proctoring

Automated Proctoring ↓

Live Proctoring ↓

Lockdown Proctoring ↓

Mobile Lockdown App ↓

Live Check-In ↓

LMS Integration ↓

Third-Party Integration ↓

Proctoring Analytics ↓

24/7 Support ↓

Media Ethics and Literacy > Quizzes > Media Ethics and Literacy: True/False Quiz

## Media Ethics and Literacy: True/False Quiz

Started: Oct 21 at 11:16am

### Quiz Instructions

Instructions:  
For each statement, mark whether it is accurate or incorrect based on the explanation provided. Each explanation should clarify why the statement is accurate or incorrect based on the provided information.

Evaluation Criteria:

- Correctness of the True/False response
- Clarity and depth of the explanation

Question 1

Media bias can influence public opinion or downplayed.

True  
 False

### Whiteboard

Press Enter to add text

Media

Social Media

Media Bias

Fake News

Public Opinion

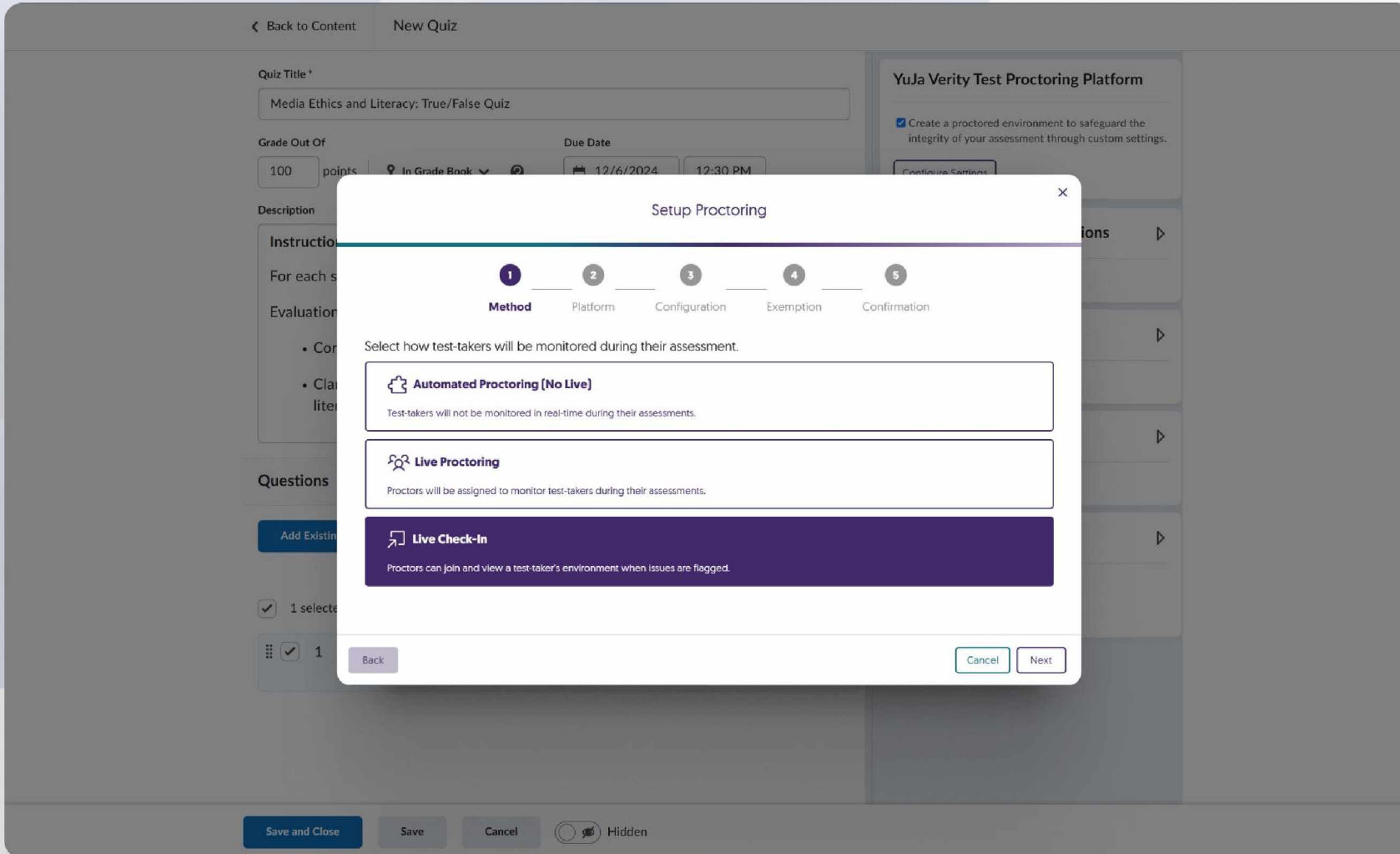
### Verity Test Proctoring

125%

Chat Whiteboard Calculator Assistance



# Ensure Test Integrity With All-In-One Proctoring



Automated Proctoring with Optional AI Capabilities



Real-Time Test Proctoring with Optional AI-Based Analysis



Third-Party and External Test Support



LMS-Integrated Lock Down Proctoring Application



# Customize Live Human Proctoring Options



One Live Proctoring Platform,  
Unlimited Sessions



Integrated Text Chat and One-  
Way Audio Bridge During Tests

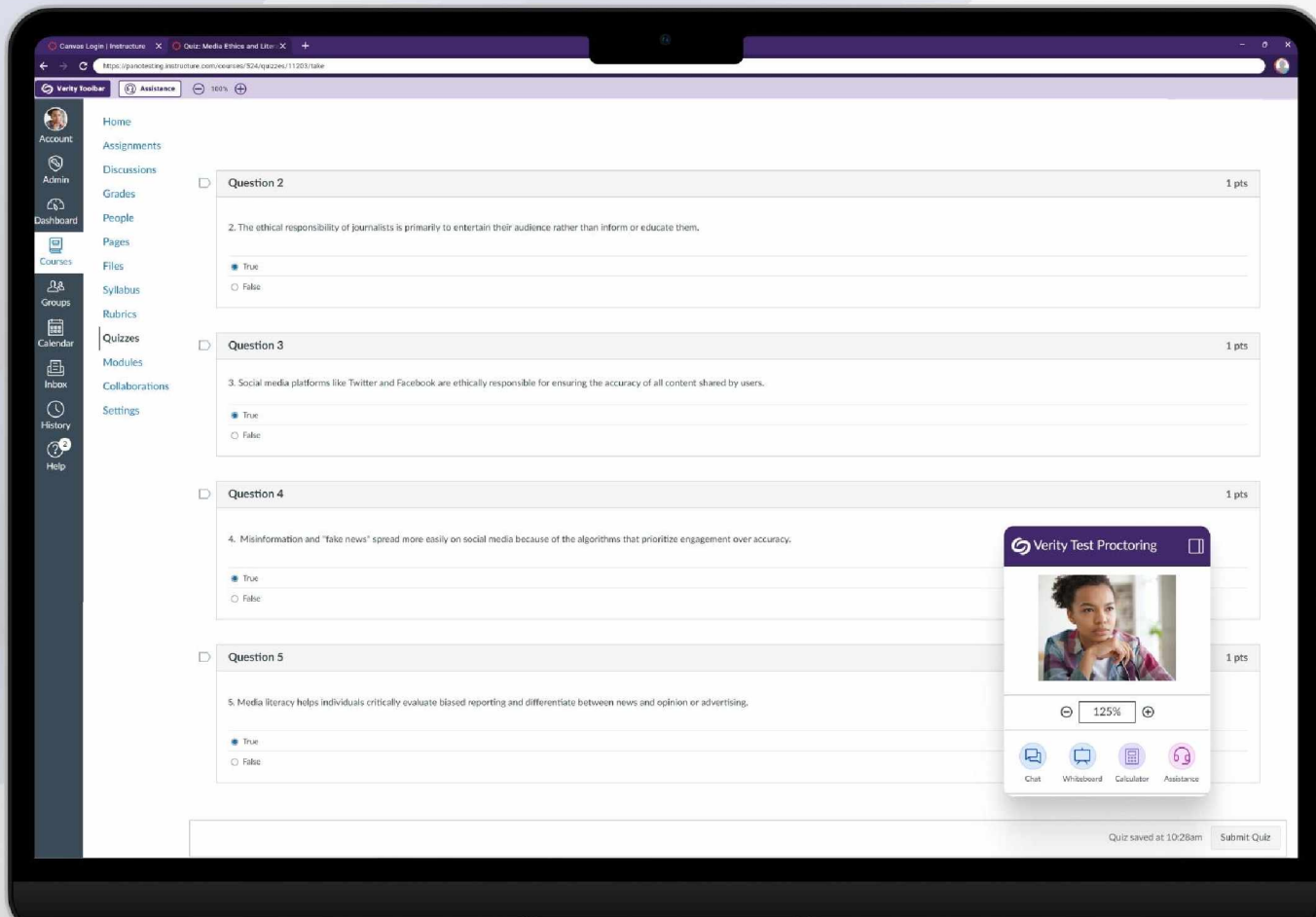


Real-Time Notifications for  
Flagged Restrictions

The screenshot displays the 'Media Ethics and Literacy: True/False Quiz (YuJa Verity Test Proctoring) - Session 3' interface. The main content area shows quiz instructions and three questions. A 'Proctor' chat window is overlaid on the right, showing a conversation about loading issues. A bottom notification bar indicates 'Audio Bridge: You are connected with Verity Student.' with a 'Disconnect' button. The bottom toolbar includes icons for Audio Bridge, Multi-View, Next Test-Taker, Leave Session, Test-Taker, Chat, Notes, Events, Settings, and Full Screen. The top right shows a 'Questions' list and a 'Time Elapsed' indicator.



# Prevent Cheating With Lockdown Proctoring



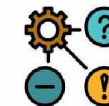
## Browser Lockdown

Restricts access to other web and applications to prevent cheating during assessments.



## Video, Audio, and Screen Monitoring

Allows instructors to monitor the student's exam environment to detect suspicious behavior.



## Optional AI-Based Behavior Detection

Uses AI to analyze student behavior and flag suspicious activity for instructor review.



## Supports Browsers, iOS, and Android

Compatible with web browsers and mobile devices (iOS and Android).



# Turn Mobile Devices into Secure Test Terminals



Restrict Students' Testing Environment Within the LMS



Create Individual Profiles for Individual Students



Lock Mobile in Kiosk Mode to Prevent App Switching



Enable Students to Take Proctored Exams on Any Device

### Setup Proctoring

Method  Live Sessions  Platform  Configuration  Exemption  Confirmation

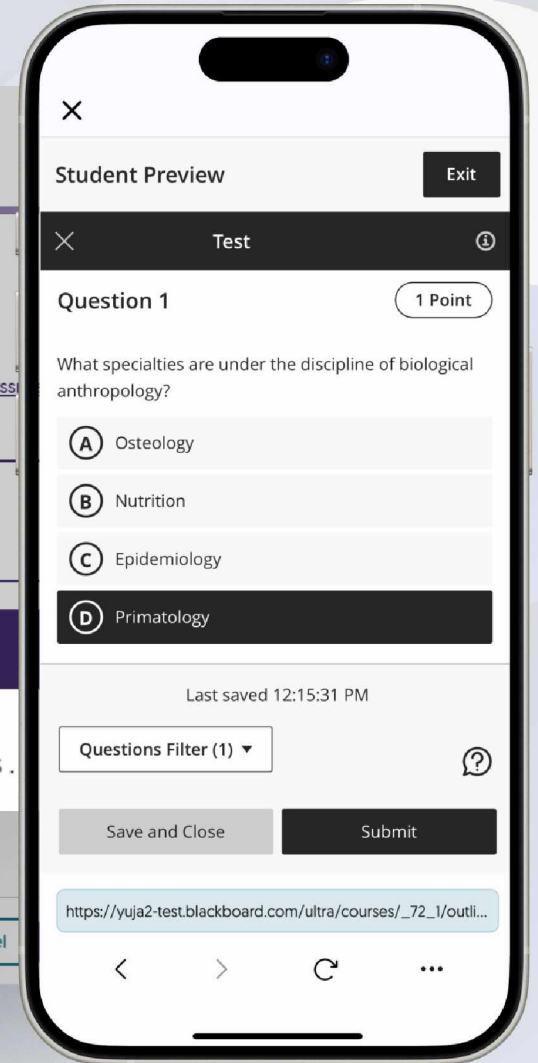
Each Verity Platform offers restrictions that can be applied to assessments. For detailed information, please refer to our guide on [Assessment Restrictions](#).

**Browser Extension**  
Access standard proctoring features requiring the Verity Browser Extension.

**Desktop Lockdown App**

**Include Mobile Lockdown App**  
Access core proctoring features using the Verity Mobile App for iOS and Android devices.

Back Cancel





# Hybrid Live Check-In Proctoring with a Real Proctor

**Live Check-In Proctoring** Today's Date: Tuesday, October 22, 2024, 9:11:21 PM

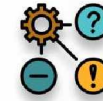
View a list of test-takers currently participating in assessments and access a recording of their live session to review flag levels.

Search by test-taker

| Test-Taker                        | Assessment                                 | Start Date             | Flag Levels     | Actions |
|-----------------------------------|--|------------------------|-----------------|---------|
| Cindy Zhang<br>Proctoring Test    | Media Ethics and Literacy: True/False Quiz | 22/10/2024 09:11:21 PM | 🛑 00 ⚠️ 00 🟢 01 | ⋮       |
| David Thompson<br>Proctoring Test | Media Ethics and Literacy: True/False Quiz | 22/10/2024 09:45:19 PM | 🛑 00 ⚠️ 00 🟢 01 | ⋮       |
| Irine Tsu<br>Proctoring Test      | Media Ethics and Literacy: True/False Quiz | 22/10/2024 10:11:11 PM | 🛑 00 ⚠️ 02 🟢 00 | ⋮       |
| Manuela Garcia<br>Proctoring Test | Media Ethics and Literacy: True/False Quiz | 22/10/2024 10:31:19 PM | 🛑 02 ⚠️ 01 🟢 00 | ⋮       |
| Omar Teng<br>Proctoring Test      | Media Ethics and Literacy: True/False Quiz | 22/10/2024 11:01:12 PM | 🛑 02 ⚠️ 00 🟢 01 | ⋮       |
| Jayson Travis<br>Proctoring Test  | Media Ethics and Literacy: True/False Quiz | 22/10/2024 11:31:22 PM | 🛑 01 ⚠️ 00 🟢 01 | ⋮       |
| Eve Gomez<br>Proctoring Test      | Media Ethics and Literacy: True/False Quiz | 22/10/2024 12:30:16 PM | 🛑 00 ⚠️ 01 🟢 00 | ⋮       |



Proctors Stand By  
24/7 to Detect Alerts



Real-time Troubleshooting  
During Exams



Offer Students Flexible  
Scheduling



Integrates into All Major  
LMS Platforms



# Integrates with All Major LMS Platforms



YuJa Verity (Ultra)

## Biological Anthropology

Content and Settings | Submissions (0) | Student Activity | Question Analysis

### Test Content

Print

Question 1 **POOL** 1 point each ...

1 of 1 question in this pool is displayed randomly to students  
[View question](#)

Allow students to add content at end of assessment

### Additional Content

Students can add text, images, and files here.

### Assessment Settings

**Proctored assessment**

Select proctoring service  
YuJa Verity - Staging

Turn on proctoring

[View YuJa Verity Settings](#)  
[View YuJa Verity Results](#)

Cancel Save







# Transform Insights into Action



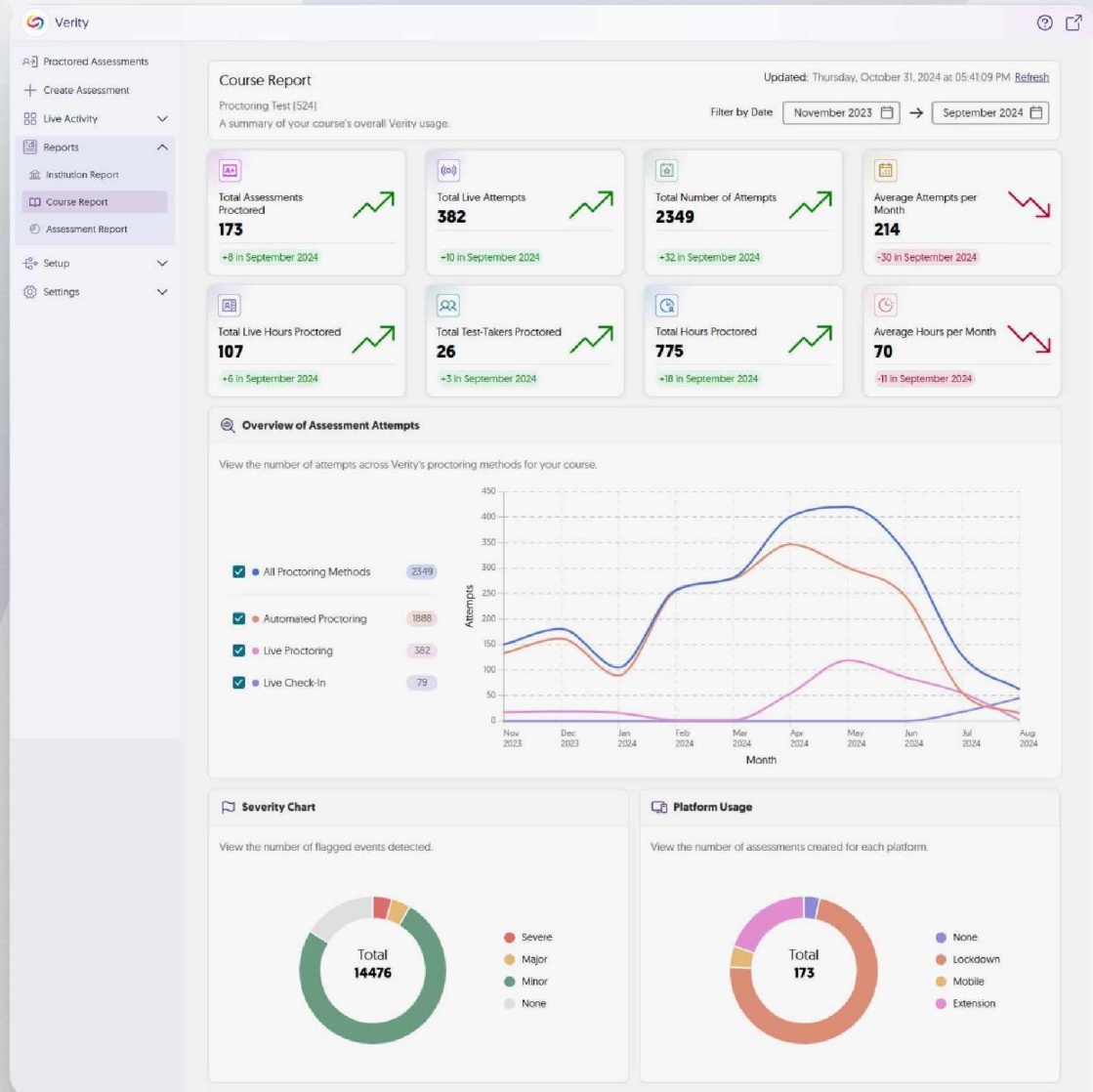
View Real-Time Reports on Proctored Test Submissions



Identify Institutional Trends and Ensure Integrity



Review Proctored Assessments with the Proctoring Replay





# Live Product Training and 24/7 Total User Support



## Contact

### Toll-Free (US/CAN)

+1 (888) 257-2278

### Toll Free (UK)

+44 (800) 058-4054

### International

+1 (408) 508-6796

**E-mail:** [support@yuja.com](mailto:support@yuja.com)

**Web:** [www.yuja.com](http://www.yuja.com)



### California Office

YuJa Inc.  
84 W. Santa Clara St.  
Fourth Floor  
San Jose, CA 95113



### Toronto Office

YuJa Canada, Inc.  
235 Yorkland Blvd  
Suite 800  
Toronto, ON